



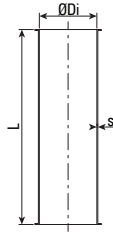
ZORLU
DEĞİRMEN

YEDEK PARÇA
SPARE PARTS
ЗАПЧАСТИ



ZSP-101 Akış Borusu

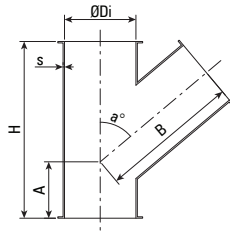
Straight Pipe
Самотёчный патрубок



Code	ØDi	L	s
ZSP-101	100	1975	1
	120	1975	1
	150	1975	1
	200	1975	1
	250	1975	1
	300	1975	2

ZSP-102 Çatal

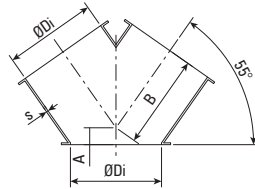
Branch Pipe Asymmetric
Тройник



Code	ØDi	H	s	a°	A	B
ZSP-102	100	250	1	50	50	200
	120	300	1	50	50	250
	150	360	1	50	55	300
	200	515	1	50	85	430

ZSP-103 Y Boru

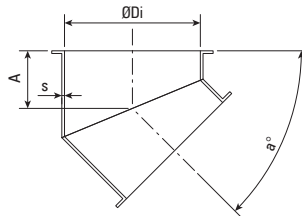
Branch Pipe Symmetric
Тройник



Code	ØDi	a°	s	A	B
ZSP-103	120	55	1	14	111
	150	55	1	20	135
	200	55	1	28	180
	250	55	1	90	230
	300	55	2	100	270

ZSP-104 Zaviye 45° - 90°

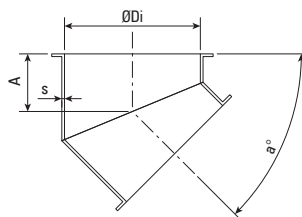
Elbow 45-90
Колено



Code	ØDi	a°	s	A
ZSP-104	120	45 ... 90	1	60
	150	45 ... 90	1	50
	200	45 ... 90	1,5	90

ZSP-105 Zaviye 55°

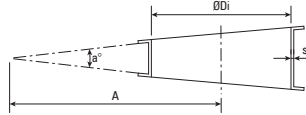
Elbow 55°
Колено



Code	ØDi	a°	s	A
ZSP-105	150	55	1	70
	200	55	1,5	80
	250	55	1,5	90
	300	55	2	100

ZSP-106 Zaviye 5° - 10° - 15° - 22,5°

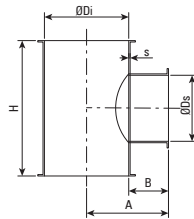
Segment 5° - 10° - 15° - 22,5°
Сегмент 5° - 10° - 15° - 22,5°



Code	ØDi	a°	s	A
ZSP-106	120	5	1,00	150
	120	10	1,00	150
	120	15	1,00	150
	120	22,5	1,00	135
	150	5	1,00	150
	150	10	1,00	150
	150	15	1,00	150
	150	22,5	1,00	150
	200	10	1,00	250
	200	22,5	1,00	170
250	10	1,00	250	

ZSP-107 T Boru

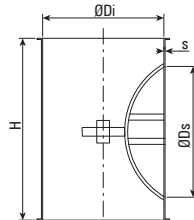
Inspection (T-Shape)
Т Патрубок с лючком



Code	ØDi	ØDs	H	s	A	B
ZSP-107	120	94	150	1,00	70	10
	150	94	150	1,00	85	10

ZSP-108 Kontrol Borusu

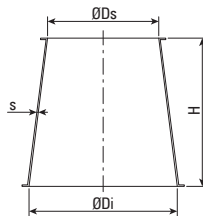
Inspection Pipe With Hinged Cover
Лючок



Code	ØDi	ØDs	H	s
ZSP-108	200	100	193	1,00
	250	100	193	1,00
	300	100	193	2,00

ZSP-109 Redüksiyon

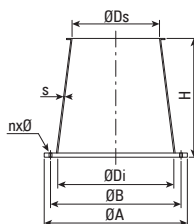
Flanged Cone
Переходник



Code	ØDi	ØDs	H	s
ZSP-109	120	100	50	1,00
	150	120	50	1,00
	150	120	100	1,00
	200	120	150	1,00
	200	150	100	1,00

ZSP-110 Flanşlı Redüksiyon

Flanged Cone
Переходник

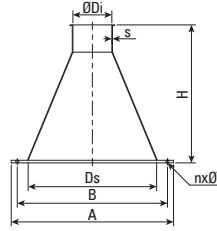


Code	ØDi	ØDs	H	s	nxØ	A	B
ZSP-110	120	100	50	1,00	6 x 6	156	145
	150	120	50	1,00	6 x 6	190	175



ZSP-111 Paketleme Koniği

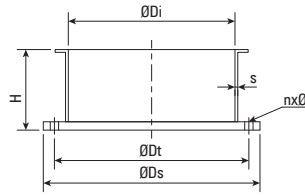
Bagging Cone
Конус



Code	ØDi	ØDs	H	s	nxØ	A	B
ZSP-111	120	180	425	1,00	4 x 12	250	224
	150	180	425	1,50	4 x 12	250	224

ZSP-112 Flanş Ağızlı

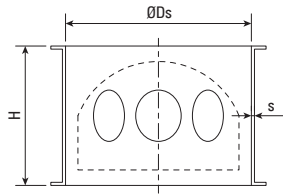
Flanged Spout
Фланцевое соединение



Code	ØDi	ØDs	ØDt	nxØ	H	s
ZSP-112	120	156	145	6 x 6	25	1,00
	150	190	175	6 x 6	25	1,00
	200	240	225	6 x 6	50	1,00
	250	290	275	6 x 6	50	1,00
	300	340	325	8 x 6	50	2,00

ZSP-113 Hava Çıkışı

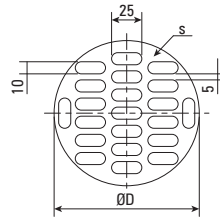
False Air Inlet
Воздухообменник



Code	ØDi	H	s	Number of Holes
ZSP-113	120	90	1,00	3
	150	90	1,00	6

ZSP-114 Perde

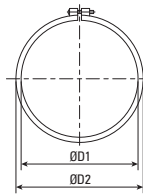
Screen
Защитная решётка энтолейтора



Code	Type	ØD	s
ZSP-114	120	130	1,50
	150	160	1,50

ZSP-115 Koralet

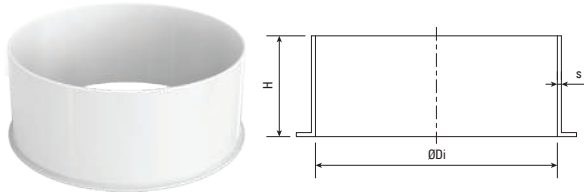
Tension Ring
Соединительные хомуты



Code	ØD1	ØD2	s	H
ZSP-115	124	135	1,00	6
	129	140	1,00	6
	154	165	1,00	6
	165	176	1,00	6
	204	215	1,00	6

ZSP-116 Açık Bağlantı

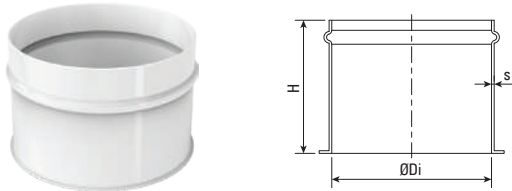
Weld-on Connection Piece
Патрубок



Code	ØDi	H	s
ZSP-116	120	25	1,00
	150	25	1,00
	200	25	1,00
	250	25	1,00
	300	25	1,50

ZSP-117 Boru Bağlantı

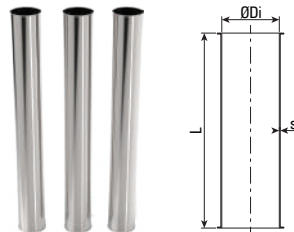
Hose Connection
Соединительный патрубок



Code	ØDi	H	s
ZSP-117	120	100	1,00
	150	100	2,00

ZSP-118 Akış Borusu (Krom)

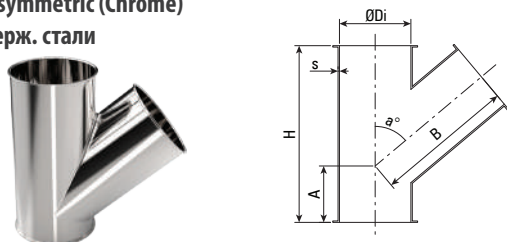
Straight Pipe (Chrome)
Самотёчный патрубок из нерж. стали



Code	ØDi	L	s
ZSP-118	120	1995	0,80
	150	1995	1,00
	200	1995	1,20
	250	1995	1,20
	300	1995	1,50

ZSP-119 Çatal (Krom)

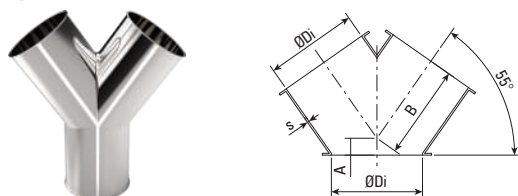
Branch Pipe Asymmetric (Chrome)
Тройник из нерж. стали



Code	ØDi	H	s	a°	A	B
ZSP-119	100	250	1	50	50	200
	120	300	1	50	50	250
	150	360	1	50	55	300
	200	515	1	50	85	430

ZSP-120 Y Boru (Krom)

Branch Pipe Symmetric (Chrome)
Y Тройник из нерж. стали

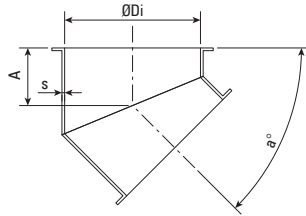


Code	ØDi	a°	s	A	B
ZSP-120	100	60	1,00	55	155
	120	63	1,00	55	220
	150	66	1,00	65	275
	200	60	1,00	80	290



ZSP-121 Zaviye 45-90 (Krom)

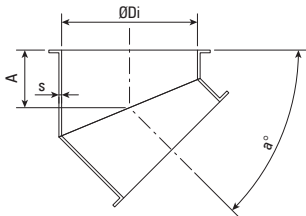
Elbow 45-90 (Chrome)
Колено 45° - 90° (Krom)



Code	ØDi	a°	s	A
ZSP-121	120	45 ... 90	0,80	60
	150	45 ... 90	1,00	50
	200	45 ... 90	1,20	90

ZSP-122 Zaviye 55° (Krom)

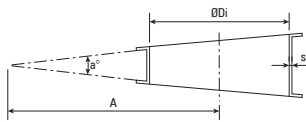
Elbow 55° (Chrome)
Колено 55° (Krom)



Code	ØDi	a°	s	A
ZSP-122	150	55	1	70
	200	55	1,5	80
	250	55	1,5	90
	300	55	2	100

ZSP-123 Zaviye 5° - 10° - 15° - 22,5° (Krom)

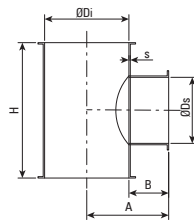
Segment 5° - 10° - 15° - 22,5° (Chrome)
Сегмент 5° - 15° - 22,5° (Krom)



Code	ØDi	a°	s	A
ZSP-123	120	5	0,80	150
	120	10	0,80	150
	120	15	0,80	150
	120	22,5	0,80	135
	150	5	1,00	150
	150	10	1,00	150
	150	15	1,00	150
	150	22,5	1,00	150
	200	10	1,20	250
	200	22,5	1,20	170
	250	10	1,20	250

ZSP-124 T Boru (Krom)

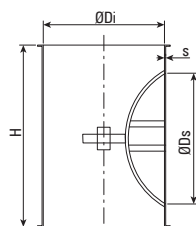
Inspection (T-Shape) (Chrome)
Патрубо кључком из нержу стали



Code	ØDi	ØDs	H	s	A	B
ZSP-124	120	94	150	0,80	70	10
	150	94	150	1,00	85	10

ZSP-125 Kontrol Borusu (Krom)

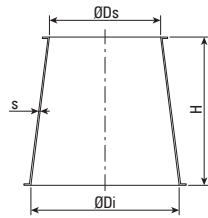
Inspection Pipe With Hinged Cover (Chrome)
Лючок



Code	ØDi	ØDs	H	s
ZSP-125	200	100	195	1,20
	250	100	245	1,20
	300	100	245	1,50

ZSP-126 Redüksiyon (Krom)

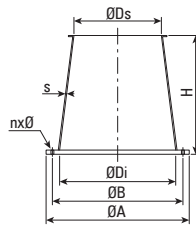
Flanged Cone (Chrome)
Переходник из нерж. стали



Code	ØDi	ØDs	H	s
ZSP-126	120	105	35	0,80
	150	120	43	1,00
	200	150	60	1,20
	250	200	80	1,20
	300	250	80	1,50

ZSP-127 Redüksiyon (Krom)

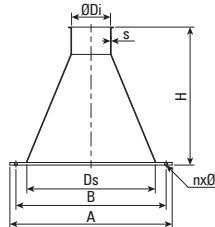
Flanged Cone (Chrome)
Переходник из нерж. стали



Code	ØDi	ØDs	H	s	nxØ	A	B
ZSP-127	120	100	50	0,80	6 x 6	156	145
	150	120	50	1,00	6 x 6	190	175

ZSP-128 Paketleme Koniği (Krom)

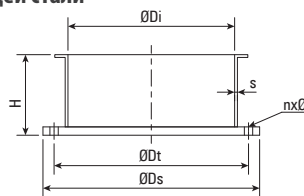
Bagging Cone (Chrome)
Конус из нерж. стали



Code	ØDi	ØDs	H	s	nxØ	A	B
ZSP-128	120	180	425	0,80	4 x 12	250	224
	150	180	425	1,00	4 x 12	250	224

ZSP-129 Flaş Ağızlı (Krom)

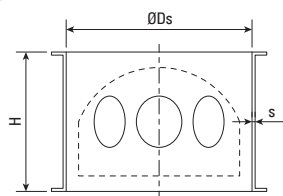
Flanged Spout (Chrome)
Фланцевое соединение из нержавеющей стали



Code	ØDi	ØDs	ØDt	nxØ	H	s
ZSP-129	120	156	145	6 x 6	28	0,80
	150	190	175	6 x 6	28	1,00
	200	240	225	6 x 6	50	1,20
	250	290	275	6 x 6	50	1,20
	300	340	325	8 x 6	50	1,50

ZSP-130 Hava Çıkışı (Krom)

False Air Inlet (Chrome)
Воздухообменник из нержавеющей стали



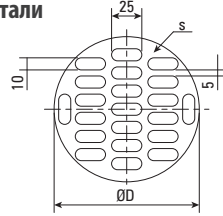
Code	ØDi	H	s	Number of Holes
ZSP-130	120	95	0,80	3
	150	95	1,00	6
	200	95	1,20	6



ZSP-131 Perde (Krom)

Screen (Chrome)

Защитная решётка энтолейтора из нерж. стали

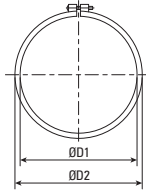


Code	Type	ØD	s
ZSP-131	120	128	1,00
	150	158	1,00
	200	208	1,00

ZSP-132 Koralet (Krom)

Tension Ring (Chrome)

Соедините льные хомуты из нерж. стали

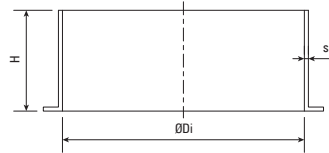


Code	ØD1	ØD2	s	H
ZSP-132	124	135	1,00	6
	129	140	1,00	6
	154	165	1,00	6
	165	176	1,00	6
	204	215	1,00	6

ZSP-133 Açık Bağlantı (Krom)

Weld-on Connection Piece (Chrome)

Патрубок из нержавеющей стали

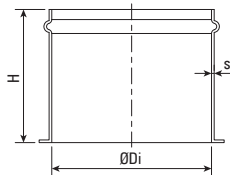


Code	ØDi	H	s
ZSP-133	120	25	0,80
	150	25	1,00
	200	25	1,00
	250	25	1,00
	300	25	1,20

ZSP-134 Boru Bağlantı (Krom)

Hose Connection (Chrome)

Соединительный патрубок из нержю стали



Code	ØDi	H	s
ZSP-134	120	100	0,80
	150	100	1,00

ZSP-135 Çatal Bağlantı (Krom)

Fork Flap (Chrome)

Клапан перекидной



ZSP-136 Soba Enjektör

Stove Injector
Пневмоприёмник



ZSP-137 Soba Enjektör (Krom)

Pipe Injector (Chrome)
Пневмоприёмник



ZSP-138 Un Klapesi (Krom)

Flour Clamp (Chrome)
Делительный клапан





divayn
FEVZİ



ZORLU DEĞİRMEN
DEĞİRMEN MAKİNELERİ İML. SAN. LTD. ŞTİ.

Fevzi Çakmak Mah. Gülistan Cd. No: 36/A Karatay / KONYA
Tel +90 332 248 10 83 // Fax +90 332 248 10 88 // info@zorumilling.com

www.zorumilling.com

